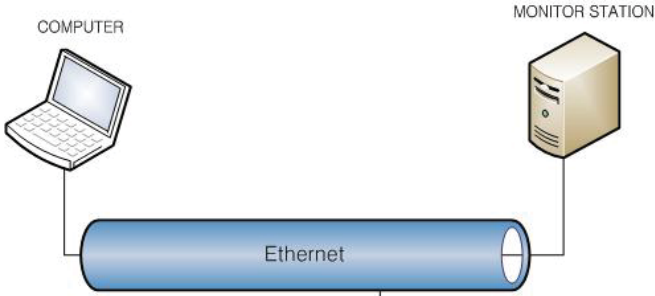


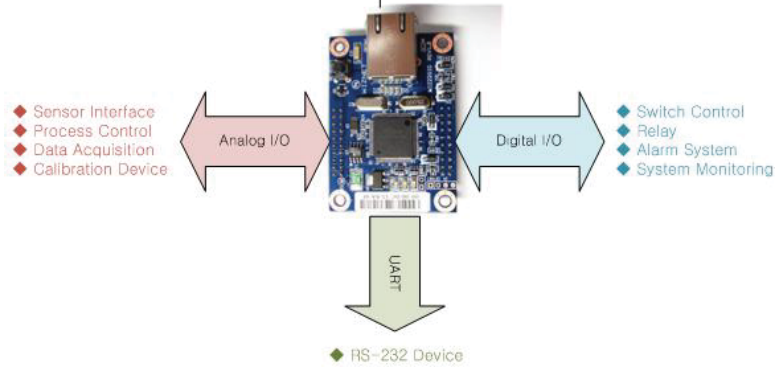
WIZ220IO

Product Brief

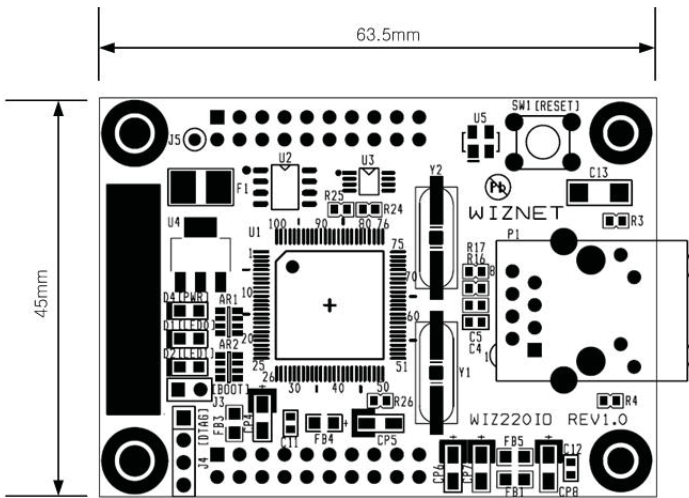
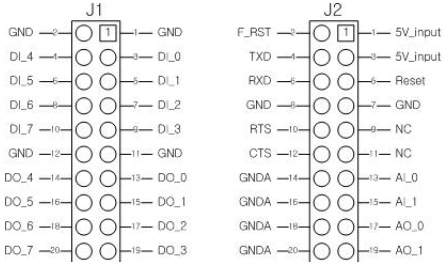


- Key Features

- Remote I/O Monitoring and Control with Ethernet
- 8 Digital Input Ports
- 8 Digital Output Ports (Output voltage : 3.3V)
- 2 Analog Input Ports (12 bit resolution)
- 2 Analog Output Ports (12 bit resolution)
- UART data Output (Max 32 byte at a time)
- Supports WebServer
- Supports Application Program
- Data acquisition and transmitting to specified host



- Dimensions



- Specifications

Parameters	Min	Typ	Max
Input Voltage (Vcc)	4.5 V	5 V	5.5 V
High Level Digital Input	2.0 V	-	5.5 V
Low Level Digital Input	-0.5 V	-	0.8 V
High Level Digital Output	3.3 V	-	-
Low Level Digital Output	-	-	0.4 V
Analog Input Range	0	-	Vcc
Analog Output Range	0	-	4 V
Operation Temperature	0 °C	-	70 °C
Storage Temperature	-40 °C	-	85 °C

